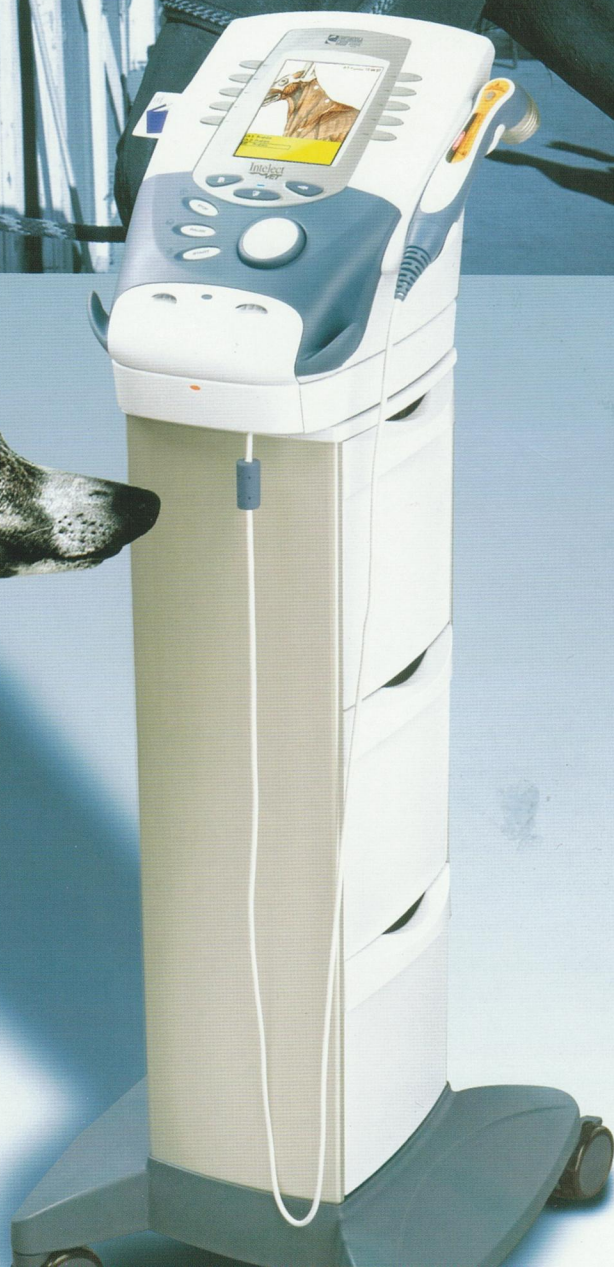
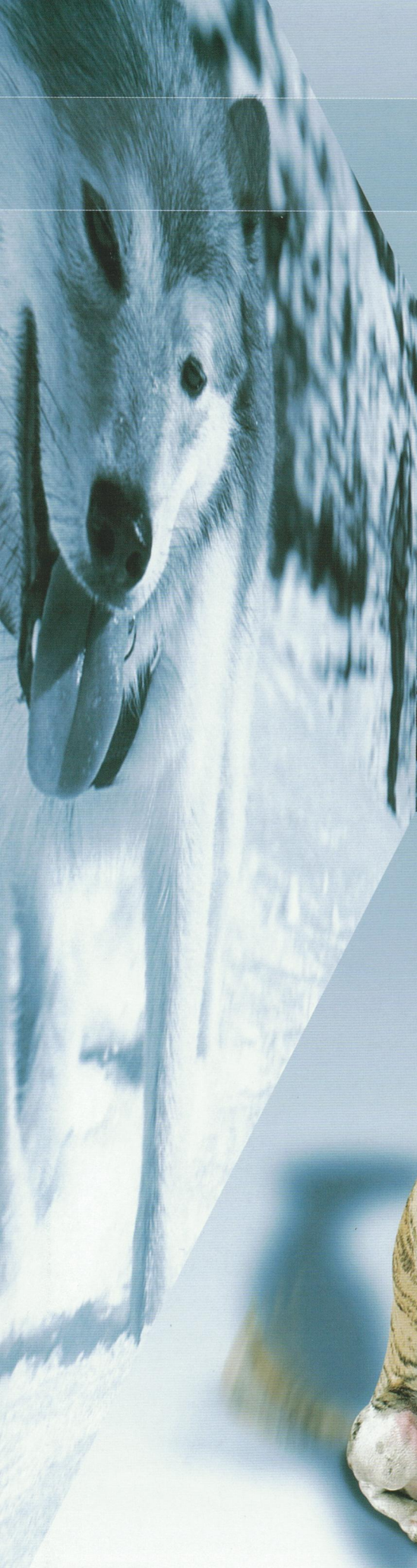


VETPT

from chattanooga group





The Physical Therapy Solution for the Veterinary Market

Chattanooga Group, the world's largest manufacturer of rehabilitation equipment for treating musculoskeletal, neurological, and soft tissue disorders, proudly brings their innovative products to the animal market. From the original Hydrocollator® HotPacs™ and heating units that Chattanooga Group pioneered 60 years ago, to the revolutionary advancements found in the Intellect® Vet system, no other



Intellect® Vet is a revolutionary product for veterinarians who provide physical therapy to animals by offering four therapy modalities in one system:

- **Electrical stimulation**
- **Ultrasound**
- **Combination stim and ultrasound**
- **Laser therapy**

Intellect Vet is loaded with features designed to make the user interface simple to operate and treatment outcomes quickly achievable:

Clinical Protocols™ - give the most appropriate parameter set for a variety of clinical conditions, easily retrievable by choosing the specific body area to be treated. Rationale regarding waveforms and illustrations of correct electrode placement is also included.

User protocols - storage bank that houses over 100 user-defined treatment protocols

Anatomical library - full color graphic illustrations of the musculoskeletal system for both canine and equine, segmented by body area and clearly labeled

Patient documentation - capture patient information like electrode placements, pain scales and records of modalities used on provided patient data cards



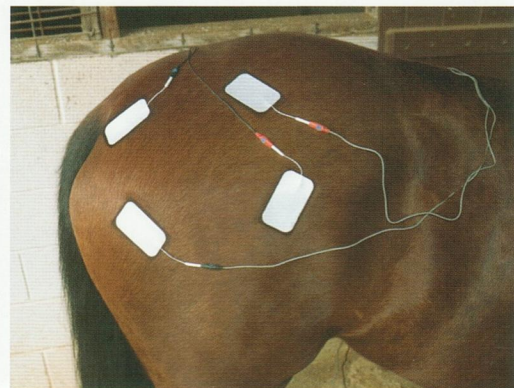
Intellect Vet is designed to be fully functional in the clinic or to be used in an environment where mobility is a must. An optional battery module is available, allowing therapy to be performed away from outlets. With the optional carry bag, transport and storage of the unit and accessories are easy.



Clinical Indications for Dogs and Horses

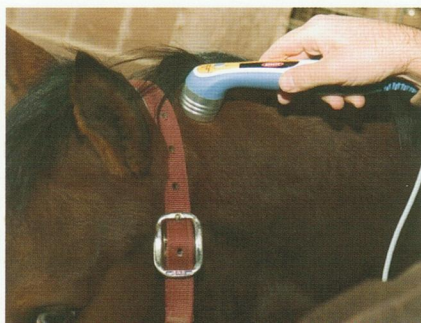
Electrotherapy

- Muscle strengthening
- Wound healing
- Edema
- Pain control
- Increase circulation
- Fracture healing



Laser Therapy

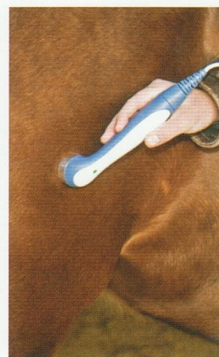
- Increase circulation
- Wound healing
- Tendonitis
- Pain control
- Decrease tendon and ligament inflammation





Ultrasound Therapy

- Increase Circulation
- Wound healing
- Increase soft tissue mobility
- Decrease tendon and ligament inflammation



Cold Therapy and Moist Heat Therapy

- Pain control
- Inflammation
- Decrease tendon and ligament inflammation



The therapeutic benefits of both moist heat therapy and cold therapy have been documented in the literature for years. This therapy can be easily applied to equines and canines with Chattanooga Group's moist heat hot packs and colpacs.

The original Hydrocollator® HotPacs™, which come in a variety of sizes, are designed to fit all body sizes, and contours. The packs are all natural, containing bentonite (a natural hydrocolloid filling) wrapped in a woven cotton blend. HotPacs provide up to 30 minutes of deep, soothing, moist heat relief.

Enclose the HotPac in the traditional terry knit weave Hydrocollator terry covers. These industrial use covers come in a variety of sizes to fit every HotPac. They stay securely in place with hook and loop closures.

Hydrocollator Heating Units, which house the HotPacs, are durable, stainless steel water tanks with fiberglass insulation throughout. They are thermostatically controlled to ensure the ideal therapeutic temperature for the HotPacs. Simply fill with water – no plumbing is required.

For cold therapy, Chattanooga Group's ColPaCs® are the benchmark. Choose either the blue vinyl or black polyurethane packs, available in a variety of sizes. Each are filled with a non-toxic silica gel that remains pliable, allowing easy application to virtually any area of the animal's body. The ColPaC delivers up to 30 minutes of soothing cold therapy.

HYDROCOLLATOR HEATING UNITS

M-2 37kg, (LxWxH) 84 x 67 x 41 cm

M-4 60kg, (LxWxH) 84 x 89 x 51 cm

SS-2 30kg, (LxWxH) 84 x 53 x 41 cm

SS 22kg, (LxWxH) 51 x 46 x 41 cm



Ordering Details

INTELECT® VET SYSTEM

REF	PRODUCT DESCRIPTION
2756	Intellect Vet Combo (2 ch)
2843	Intellect Vet Combo (4 ch)
Standard accessories include: 5cm ² Ultrasound Applicator Patient Data Cards (5x), Patient Switch, Black and Red Carbon Electrodes, Lead Wires, Nylatex wraps, Ultrasound Gel, User Manual	
OPTIONAL ACCESSORIES	
2766	Laser Module
2767	Battery module
27333	1 cm ² Ultrasound Applicator
27334	2 cm ² Ultrasound Applicator
27336	10 cm ² Ultrasound Applicator
27468	Intellect Carry Bag
27508	Operator Remote (ch 1/2)
27079	Operator Remote (ch 3/4)
2775	Therapy System Cart
2785	Vacuum Electrode Module
2774	Vacuum Module w/ Therapy System Cart
27799	670nm LED Diode 10mW
27803	850nm Laser Diode 40mW
27840	850nm Laser Diode 100mW
27804	850nm Laser Diode 150mW
27841	850nm Laser Diode 200mW
27805	820nm Laser Diode 300mW
27810	9 Diode Cluster Applicator, 290mW Total: 5 x 850nm 50mW Lasers, 4 x 670nm 10mW LED
27811	9 Diode Cluster Applicator, 540mW Total: 5 x 850nm 100mW Lasers, 4 x 670nm 10mW LED
27812	9 Diode Cluster Applicator, 1040mW Total: 5 x 850nm 200mW Lasers, 4 x 670nm 10mW LED
27813	13 Diode Cluster Applicator, 265mW Total: 3 x 850nm 50mW Lasers, 7 x 670nm 10mW LED, 3 x 950nm 15mW LED
27814	13 Diode Cluster Applicator, 415mW Total: 3 x 850nm 100mW Lasers, 7 x 670nm 10mW LED, 3 x 950nm 15mW LED
27816	13 Diode Cluster Applicator, 715mW Total: 3 x 850nm 200mW Lasers, 7 x 670nm 10mW LED, 3 x 950nm 15mW LED
27815	19 Diode Cluster Applicator, 325mW Total: no Lasers, 6 x 670nm 10mW LED, 7 x 880nm 25mW LED, 6 x 950nm 15mW LED
27809	33 Diode Cluster Applicator, 565mW Total: no Lasers, 12 x 670nm 10mW LED, 13 x 880nm 25mW LED, 8 x 950nm 15mW LED
27802	33 Diode Cluster Applicator, 690mW Total: 5 x 850nm 50mW Lasers, 12 x 670nm 10mW LED, 8 x 880nm 25mW LED, 8 x 950nm 15mW LED
27807	33 Diode Cluster Applicator, 940mW Total: 5 x 850nm 100mW Lasers, 12 x 670nm 10mW LED, 8 x 880nm 25mW LED, 8 x 950nm 15mW LED
27808	33 Diode Cluster Applicator, 1440mW Total: 5 x 850nm 200mW Lasers, 12 x 670nm 10mW LED, 8 x 880nm 25mW LED, 8 x 950nm 15mW LED
4248	Ultrasound Transmission Gel 270mL
4238	Ultrasound Transmission Gel 5L
42061	Dura-Stick II® 3 cm (1.25") round electrodes
42041	Dura-Stick II 5 cm (2") square electrodes
42042	Dura-Stick II 5 cm (2") round electrodes
42043	Dura-Stick II 5 x 9 cm (2" x 3.5") rectangular electrodes
42044	Dura-Stick II 7 cm (2.75") round electrodes
42045	Dura-Stick II 7 x 13 cm (2.75" x 5") rectangular electrodes

INTELECT VET TECHNICAL SPECIFICATIONS

Mains Power: 100-240VAC, 50-60Hz
Weight: 3.2 kg
Dimensions: (L x W x H) 33 x 22 x 29 cm
Electrical Safety Class: Class I, Electrotherapy Type BF, Ultrasound Type B
Safety Tests: IEC 60601-1, IEC 60601-1-2, IEC 60601-2-5, IEC 60601-2-10

CLINIC SUPPLIES

REF	PRODUCT DESCRIPTION
	HYDROCOLLATOR® MOIST HEAT HOTPACS™
1008	23 cm x 39 cm (10" x 18")
1010	25 cm x 61 cm (10" x 24")
1004	Oversize 38 cm x 61 cm (15" x 24")
1002	Neck Contour 61 cm (24" Long)
1014	Half Size 13 cm x 30 cm (5" x 12")
1026	Hand 17 cm x 32 cm (6.5" x 12.5")
1006	Standard 25 cm x 30 cm (10" x 12")
	TERRY COVERS
1118	Standard 48 cm x 69 cm (19" x 27")
1126	Oversize 61 cm x 91 cm (24" x 36")
1104	Neck Contour 64 cm x 46 cm (25" x 18")
1132	Hand Contour Dual Pocket Terry Cover 58 cm x 36 cm (23" x 14")
1102	Standard Size Foam-Filled 48 cm x 69 cm (19" x 27")
1124	Oversize Foam-Filled 61 cm x 91 cm (24" x 36")
1120	Neck Contour Foam-Filled 64 cm x 41 cm (25" x 16")
1108	Standard Foam-Filled Pocket 43 cm x 69 cm (17" x 27")
1110	Oversize Foam-Filled Pocket 61 cm x 91 cm (24" x 36")
1112	Standard Vinyl 48 cm x 46 cm (19" x 18")
1114	Oversize Vinyl 55 cm x 65 cm (21.5" x 25.5")
	HYDROCOLLATOR HEATING UNITS
2407	M-2 Mobile Hydrocollator 220 V Unit (2402 120 V Unit)
2506	M-4 Mobile Hydrocollator 220 V Unit (2502 120 V Unit)
2307	SS-2 Mobile Hydrocollator 220 V Unit (2302 120 V Unit)
2207	SS Stationary Hydrocollator 220 V Unit (2202 120 V Unit)
2107	E-1 Stationary Hydrocollator 220 V Unit (2102 120 V Unit)
2806	E-2 Stationary Hydrocollator 220 V Unit (2802 120 V Unit)
	HEATING UNIT TECHNICAL SPECIFICATIONS
	Mains Power: 110~240 V 50/60 Hz Power Consumption: 1000 W Electrical Safety Class: Class 1, Type B Safety Tests: EN 60601-1
	BLUE VINYL COLPACS
1512	Oversize 28 cm x 53 cm (11" x 21")
1500	Standard Size 28 cm x 36 cm (11" x 14")
1506	Half Size 19 cm x 28 cm (7.5" x 11")
1508	Neck contour 58 cm (23" Long)
1502	8 cm x 28 cm (3" x 11")
1504	Quarter Size 14 cm x 19 cm (5.5" x 7.5")
	BLACK POLYURETHANE COLPACS
1554	Neck Contour 53 cm Long (21" Long)
1556	Oversize 32 cm x 47 cm (12.5" x 18.5")
1552	Standard Size 25 cm x 34 cm (10" x 13.5")
1562	Half Size 17 cm x 28 cm (6.5" x 11")
	COLPAC CHILLING UNITS
3114	C-5 220 V Unit (3102 110 V Unit) 74kg, (LxWxH) 84 x 69 x 39 cm
3014	C-2 220 V Unit (3002 120 V Unit) 61kg, (LxWxH) 84 x 53 x 39 cm
3214	C-6 220 V Unit (3202 120 V Unit) 77kg, (LxWxH) 84 x 89 x 51 cm

COLPAC CHILLING UNIT TECHNICAL SPECIFICATIONS

Mains Power: 220-240V, 50Hz; 115 V, 60Hz
Electrical Safety Class: Type B
Safety Tests: IEC 60601-1

STOOLS

77063	Pneumatic stool (black without back)
77067	Pneumatic stool (black with back)
77075	Pneumatic stool (deluxe black with foot ring)

CARTS

4002	MB Model Stainless Steel Cart
4004	MB-T Model Stainless Steel Cart
4018	MB-TD Model Stainless Steel Cart





4717 Adams Road
P.O. Box 489
Hixson, TN 37343 USA

Distributed by: